

Nº. 12

GROSVENOR PLACE

LONDON, SW 1

A DISTINGUISHED ADDRESS FOR MODERN BUSINESS



12
GROSVENOR PLACE

N^o. 12
GROSVENOR PLACE

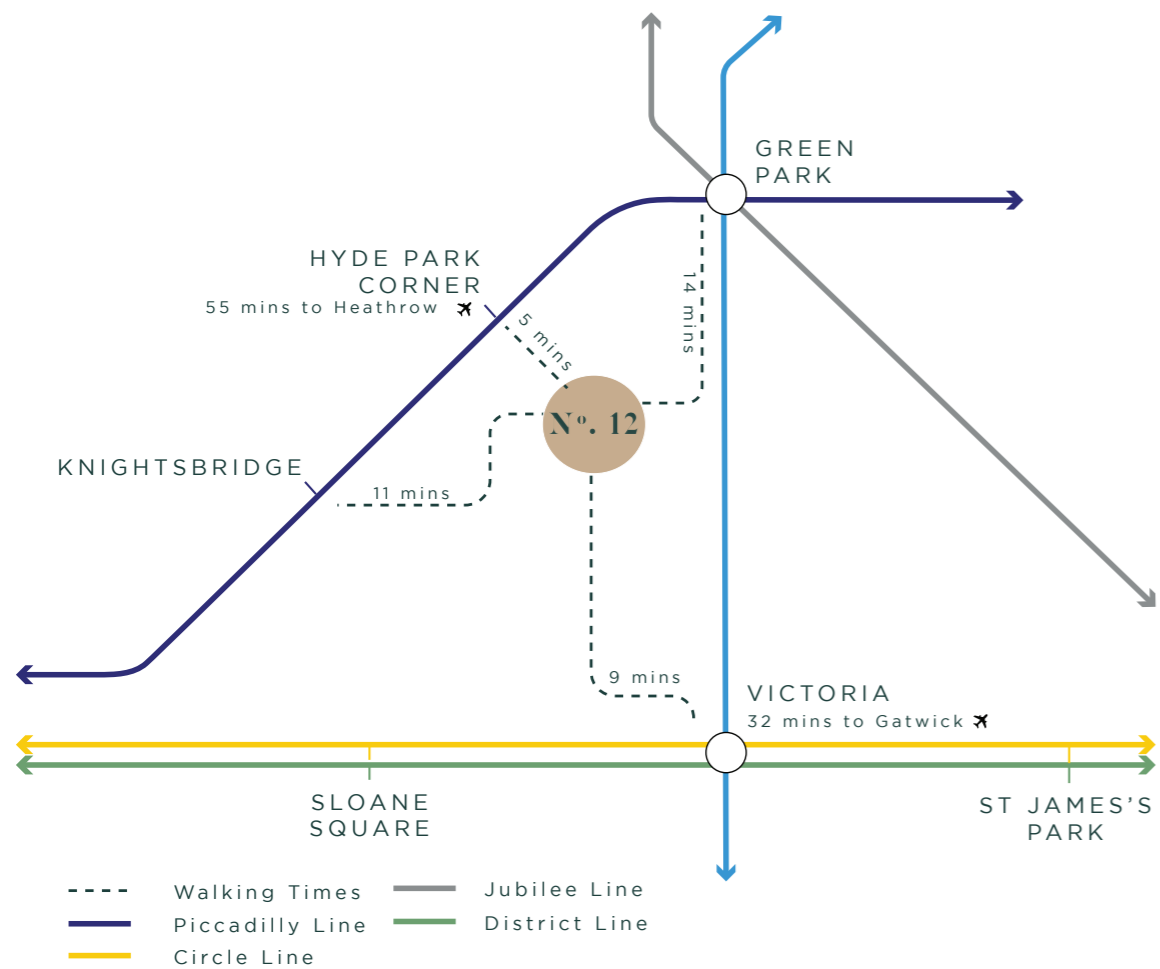
N^o. 12

LOCATION

Belgravia has long been one of London's most prestigious districts, it offers the perfect balance between character and modern amenity.

With its blend of world-class hotels, stylish boutique restaurants, independent retailers, and beautifully curated outdoor spaces, the area continues to offer an exceptional living and working environment. Ideally located just moments from Victoria, Mayfair, and Knightsbridge, Belgravia provides unrivaled access to some of the West End's most iconic destinations, making it an attractive choice for those seeking both prestige and proximity to London's thriving commercial and cultural hubs.

CONNECTIVITY



Nearby Occupiers

- The Peninsula Hotel
- The Lanesborough
- Cleveland Clinic
- The Halkin
- Jo Loves
- Muse by Tom Aikens
- Pétrus
- Olivomare
- Burberry
- ON Motcomb
- The Grenadier
- The Emory Roof Top Bar

DESCRIPTION

12 Grosvenor Place is a distinguished London mansion in the Renaissance style, located on the western edge of Green Park. Originally constructed in the 1860s, this historic property seamlessly blends classic elegance with modern functionality.

The 2nd to 5th floors have recently undergone a comprehensive refurbishment, featuring a high-specification office fit-out. Each floor offers exclusive WCs and convenient access to a communal kitchen. Additionally, occupants can utilise premium, bookable meeting rooms situated on the ground floor, ensuring a professional and well-equipped working environment.

FLOOR AREAS

The available space is arranged over the 2nd-5th floors, comprising the following approximate net internal floor areas:

Floor	Sq ft	Sqm
5th Floor	1,243	115.5
4th Floor	1,568	145.7
3rd Floor	1,544	143.3
2nd Floor	2,074	192.7
Total	6,429	597.2





Specification



Grand Entrance
and Manned
Reception



Bookable
Meeting
Rooms



Excellent
Natural
Light



Demised WC's on
Each Floor



Passenger
Lift



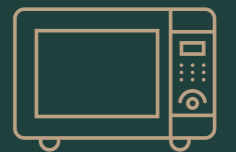
Newly
Refurbished



Fitted Floors
Available



Prestigious
Belgravia
Address

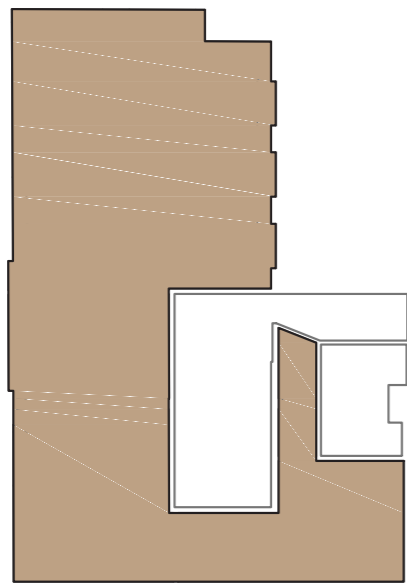


Communal
Kitchen

FLOOR PLANS

FIFTH FLOOR

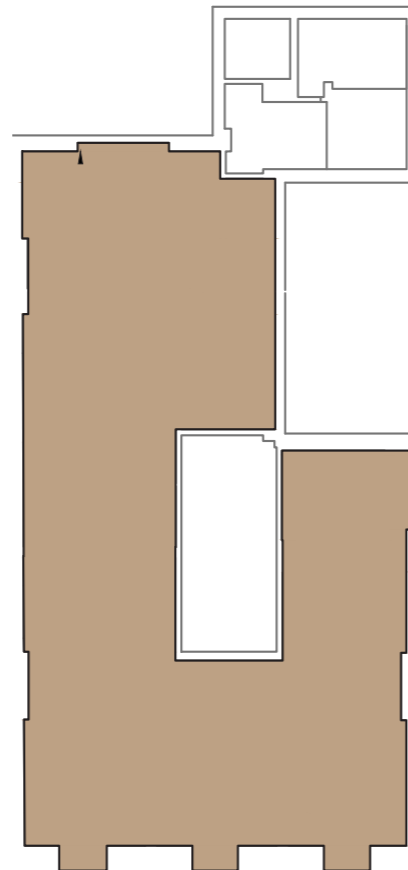
1,243 sq ft



GROSVENOR PLACE

FOURTH FLOOR

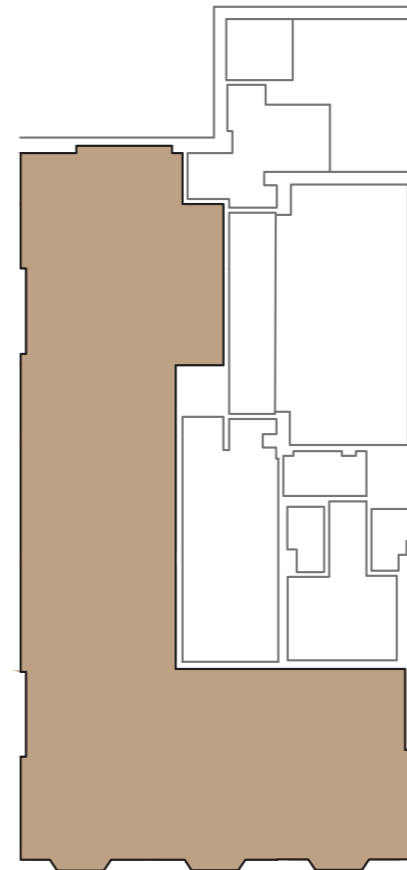
1,688 sq ft



GROSVENOR PLACE

THIRD FLOOR

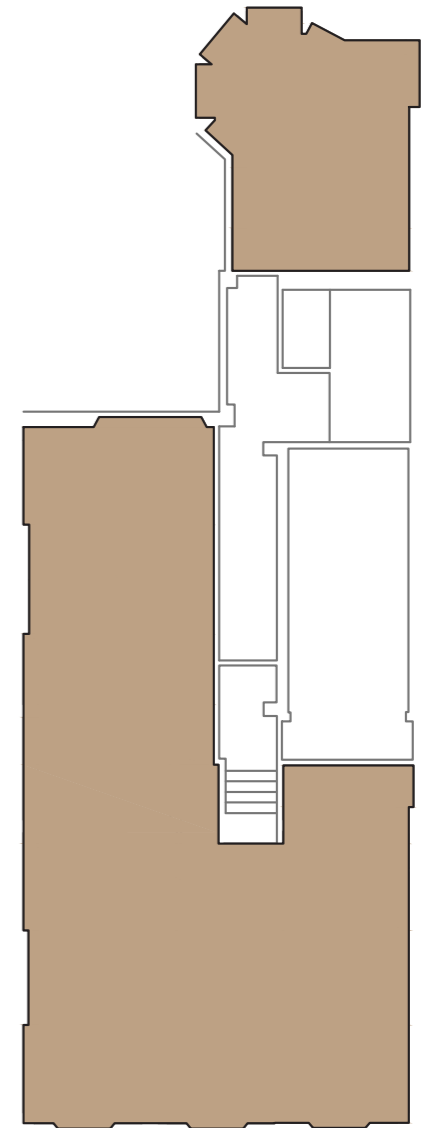
1,544 sq ft



GROSVENOR PLACE

SECOND FLOOR

2,074 sq ft



GROSVENOR PLACE

FURTHER INFORMATION

RENT

£72.50 per sq ft.

RATES

£17.00 - £20.00 per sq ft.

EPC

Available upon request.

SERVICE CHARGE

£18.00 per sq ft.

LEASE TERMS

A new lease is available directly from the Landlord.

CONTACT

For further information or to arrange an inspection please contact;

Harry Cormack:

t: +44 7815 463 822

e: harry.cormack@levyrealestate.co.uk

Megan Carr:

t: +44 7896 899 798

e: megan.carr@levyrealestate.co.uk

Calum Holden:

t: +44 7508 610 454

e: calum.holden@levyrealestate.co.uk

MISREPRESENTATION ACT 1967 - Levy Real Estate LLP for themselves and for the Vendors or lessors of this property whose agents they are given notice that: All description, dimensions, reference to condition and necessary permissions for use and occupation and other details are given without responsibility and any intending purchasers or tenants should not rely on them as statements or representations of fact but must satisfy themselves by inspection or otherwise as to the correctness of each of them. Any services mentioned have not been tested and therefore prospective occupiers should satisfy themselves as to their operation. These particulars are produced in good faith and set out a general guide only and do not constitute part of any offer or contract. No person in the employment of Levy Real Estate LLP has any authority to make or give representation or warranty in relation to this property. All prices and rents are quoted exclusive of VAT unless otherwise stated. December 24