

# 150a Commercial Street, Spitalfields, E1, 2,127 Sq.Ft

## Flagship Spitalfields Class E Opportunity



RETAIL

London | Consultancy | Transactions | Independent | Experienced



### Location

The property occupies a prominent frontage onto Commercial Street forming part of a wider mixed-use development.

The unit is arranged across ground and lower ground floors, with excellent floor to ceiling heights throughout.

The property sits opposite Spitalfields Market which is home to notable occupiers including Brother Marcus, Dos Mas Tacos, Arabica and Players Social. Commercial Street itself hosts a similarly impressive array of brands including Loaf, All Saints, Urban Outfitters and Hawksmoor.

### Accommodation (NIA)

The premises are arranged over ground and lower ground floors, as follows:

Description	sq ft	sq m
Ground Floor	983	91.32
Lower Ground	1,144	106.28
<b>Total</b>	<b>2,127</b>	<b>197.6</b>

### Rent

Upon Application.

### Lease

New lease available on a term to be agreed.

MISREPRESENTATION ACT 1967 - Levy Real Estate LLP for themselves and for the Vendors or lessors of this property whose agents they are given notice that: All description, dimensions, reference to condition and necessary permissions for use and occupation and other details are given without responsibility and any intending purchasers or tenants should not rely on them as statements or representations of fact but must satisfy themselves by inspection or otherwise as to the correctness of each of them. Any services mentioned have not been tested and therefore prospective occupiers should satisfy themselves as to their operation. These particulars are produced in good faith and set out a general guide only and do not constitute part of any offer or contract. No person in the employment of Levy Real Estate LLP has any authority to make or give representation or warranty in relation to this property. All prices and rents are quoted exclusive of VAT unless otherwise stated. August 2024

Levy Real Estate LLP  
Heddon House, 149-151 Regent  
Street, London, W1B 4JD

T +44 20 7930 1070  
E [info@levyrealstate.co.uk](mailto:info@levyrealstate.co.uk)

[www.levyrealstate.co.uk](http://www.levyrealstate.co.uk)



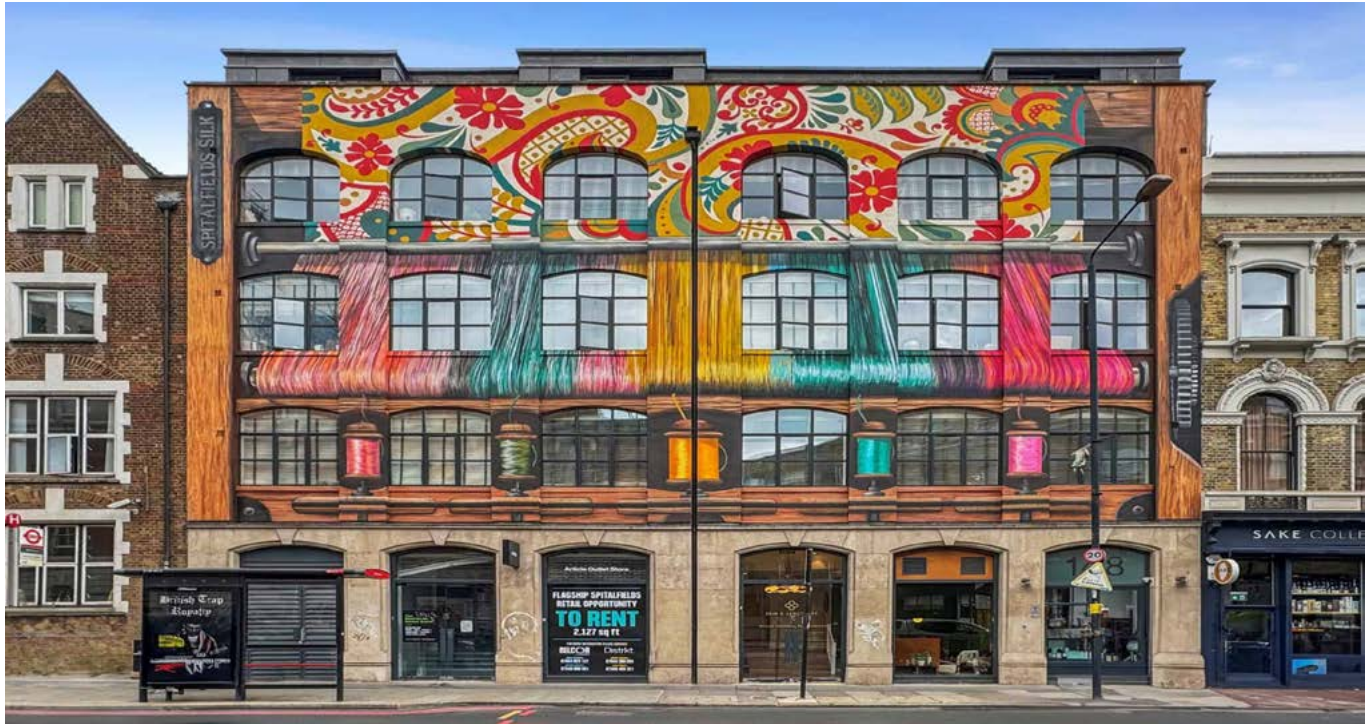
**150a Commercial Street,  
Spitalfields, E1, 2,127 Sq.Ft**

**Flagship Spitalfields Class E Opportunity**



RETAIL

London | Consultancy | Transactions | Independent | Experienced



## Use

Class E.

## Rates

The rateable value of the property is £53,000.

Interested parties should make enquiries with the Tower Hamlets Council.

## EPC

Available upon request.

## Legal Costs

Each party is to be responsible for their own legal and all other professional costs incurred in the transaction.

## Further Information and Viewing

Viewings are by appointment only via sole agents Levy Real Estate.

### Levy Real Estate:

#### Liv England

T: 07530 807 800

E: [liv.England@levyrealstate.co.uk](mailto:liv.England@levyrealstate.co.uk)

#### Matt Paulson-Ellis

T: 07867 781 811

E: [matt.paulson-ellis@levyrealstate.co.uk](mailto:matt.paulson-ellis@levyrealstate.co.uk)

MISREPRESENTATION ACT 1967 - Levy Real Estate LLP for themselves and for the Vendors or lessors of this property whose agents they are given notice that: All description, dimensions, reference to condition and necessary permissions for use and occupation and other details are given without responsibility and any intending purchasers or tenants should not rely on them as statements or representations of fact but must satisfy themselves by inspection or otherwise as to the correctness of each of them. Any services mentioned have not been tested and therefore prospective occupiers should satisfy themselves as to their operation. These particulars are produced in good faith and set out a general guide only and do not constitute part of any offer or contract. No person in the employment of Levy Real Estate LLP has any authority to make or give representation or warranty in relation to this property. All prices and rents are quoted exclusive of VAT unless otherwise stated. August 2024

Levy Real Estate LLP  
Heddon House, 149-151 Regent  
Street, London, W1B 4JD

T +44 20 7930 1070

E [info@levyrealstate.co.uk](mailto:info@levyrealstate.co.uk)

[www.levyrealstate.co.uk](http://www.levyrealstate.co.uk)



# 150a Commercial Street, Spitalfields, E1, 2,127 Sq.Ft



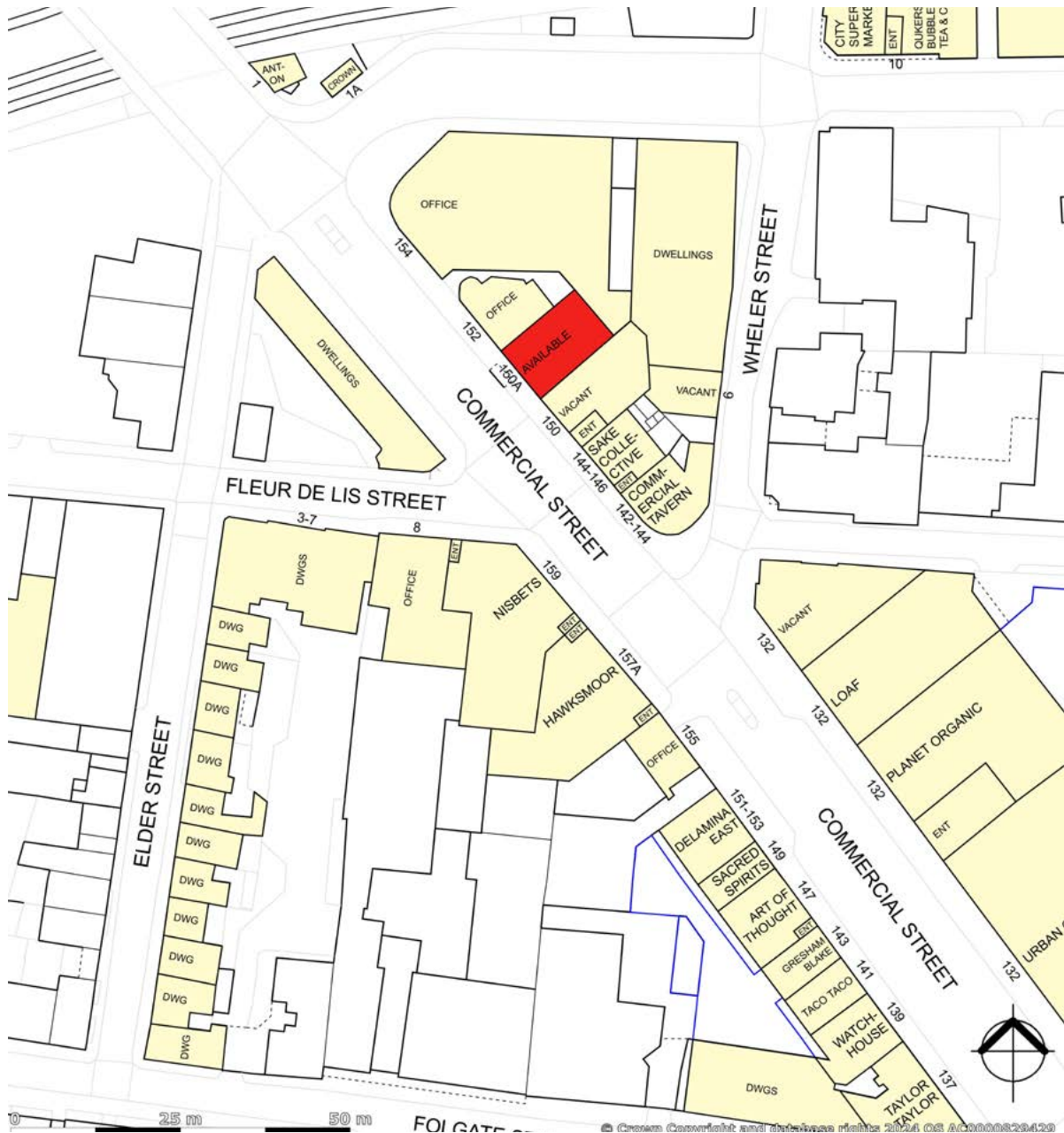
## Flagship Spitalfields Class E Opportunity

RETAIL

London | Consultancy | Transactions | Independent | Experienced

### Location Plan

Not to scale, indicative only



MISREPRESENTATION ACT 1967 - Levy Real Estate LLP for themselves and for the Vendors or lessors of this property whose agents they are given notice that: All description, dimensions, reference to condition and necessary permissions for use and occupation and other details are given without responsibility and any intending purchasers or tenants should not rely on them as statements or representations of fact but must satisfy themselves by inspection or otherwise as to the correctness of each of them. Any services mentioned have not been tested and therefore prospective occupiers should satisfy themselves as to their operation. These particulars are produced in good faith and set out a general guide only and do not constitute part of any offer or contract. No person in the employment of Levy Real Estate LLP has any authority to make or give representation or warranty in relation to this property. All prices and rents are quoted exclusive of VAT unless otherwise stated. August 2024

Levy Real Estate LLP  
Heddon House, 149-151 Regent Street, London, W1B 4JD

T +44 20 7930 1070  
E [info@levyrealstate.co.uk](mailto:info@levyrealstate.co.uk)

[www.levyrealstate.co.uk](http://www.levyrealstate.co.uk)

