

# 19 Berkley Street, London, W1J 8ED

## 731 sq ft of Fitted Offices Available

OFFICE

London | Consultancy | Transactions | Independent | Experienced

### Location

The property offers a prestigious address and is set within prime Mayfair, just a few minutes' walk from both Green Park Station, Bond Street Station and other local amenities such as Berkeley Square. The surrounding area comprises a collection of the finest restaurants and shopping outlets in the West End.

### Description

New lease available on the 7th Floor at 19 Berkeley Street. The floor benefits from a modern fit out and excellent natural light, sitting at the top of the building. The reception and common parts have recently undergone comprehensive refurbishment

### Specification

- Fitted office to provide 2 x meeting rooms, kitchenette and open plan work space
- Newly refurbished reception and common parts
- Manned reception
- Excellent natural light throughout
- Air-conditioning
- Raised floors
- 2 x WCs on each floor
- 2 x passenger lifts
- Shower facilities

### Accommodation (GIA)

Available by way of a new lease direct from the Landlord for a term to be arranged.

Description	sq ft	sq m
7th Floor	731	67.91
<b>Total</b>	<b>731</b>	<b>67.91</b>

### Lease

A new lease is available direct from the Landlord for a term to be agreed.

### Rent

£75.00 per sq. ft.



MISREPRESENTATION ACT 1967 - Levy Real Estate LLP for themselves and for the Vendors or lessors of this property whose agents they are given notice that: All description, dimensions, reference to condition and necessary permissions for use and occupation and other details are given without responsibility and any intending purchasers or tenants should not rely on them as statements or representations of fact but must satisfy themselves by inspection or otherwise as to the correctness of each of them. Any services mentioned have not been tested and therefore prospective occupiers should satisfy themselves as to their operation. These particulars are produced in good faith and set out a general guide only and do not constitute part of any offer or contract. No person in the employment of Levy Real Estate LLP has any authority to make or give representation or warranty in relation to this property. All prices and rents are quoted exclusive of VAT unless otherwise stated. September 2024

Levy Real Estate LLP  
Heddon House, 149-151 Regent  
Street, London, W1B 4JD

T +44 20 7930 1070  
E [info@levyrealstate.co.uk](mailto:info@levyrealstate.co.uk)

[www.levyrealstate.co.uk](http://www.levyrealstate.co.uk)

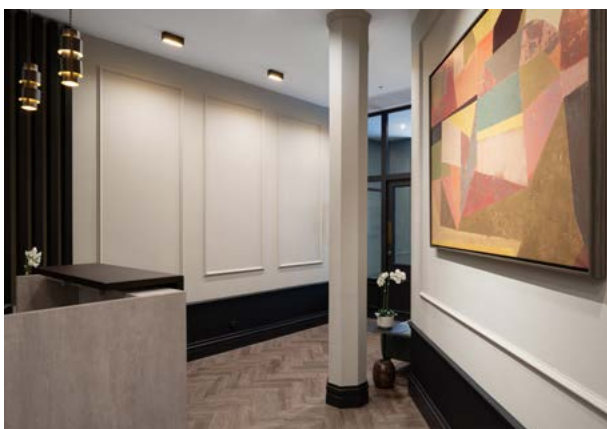
**19 Berkley Street,  
London, W1J 8ED**



**731 sq ft of Fitted Offices Available**

**OFFICE**

London | Consultancy | Transactions | Independent | Experienced



### Rates

£34.00 per sq. ft.

### Service Charge

£18.16 per sq ft

### Further Information

#### Harry Cormack

M: 07815 463 822

E: [harry.cormack@levyrealestate.co.uk](mailto:harry.cormack@levyrealestate.co.uk)

#### Samantha Jones

M: 07800 539 387

E: [samantha.jones@levyrealestate.co.uk](mailto:samantha.jones@levyrealestate.co.uk)

#### Meg Carr

M: 07896 899798

E: [megan.carr@levyrealestate.co.uk](mailto:megan.carr@levyrealestate.co.uk)

MISREPRESENTATION ACT 1967 - Levy Real Estate LLP for themselves and for the Vendors or lessors of this property whose agents they are given notice that: All description, dimensions, reference to condition and necessary permissions for use and occupation and other details are given without responsibility and any intending purchasers or tenants should not rely on them as statements or representations of fact but must satisfy themselves by inspection or otherwise as to the correctness of each of them. Any services mentioned have not been tested and therefore prospective occupiers should satisfy themselves as to their operation. These particulars are produced in good faith and set out a general guide only and do not constitute part of any offer or contract. No person in the employment of Levy Real Estate LLP has any authority to make or give representation or warranty in relation to this property. All prices and rents are quoted exclusive of VAT unless otherwise stated. September 2024

Levy Real Estate LLP  
Heddon House, 149-151 Regent  
Street, London, W1B 4JD

T +44 20 7930 1070

E [info@levyrealestate.co.uk](mailto:info@levyrealestate.co.uk)

[www.levyrealestate.co.uk](http://www.levyrealestate.co.uk)

